

Line Images

Strip Log Sample Report

Prepared by:

Line Images (2013) Ltd.

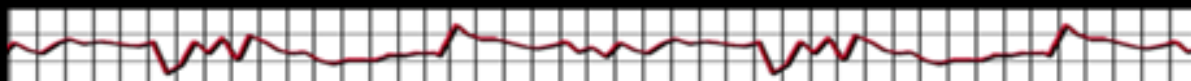
*#203, 2915 – 19th Street N.E.,
Calgary, Alberta T2E 7A2*

Tel: (403) 250-2228

Fax: (403) 291-9805

logs@lineimages.com

www.lineimages.com



ACCESSORIES

MINERAL

- Calc
- Pyr
- Micmica
- Glau
- Lithfrag
- Qtz
- Sandy
- Silt
- Anhy
- Arggrn
- Arg
- Bent
- Bit
- Brecfrag
- Carb
- Chtdk

-
-
-
-
-
-
-
-
-
-
-
-
-
-
-
-
-

- Chtlt
- Dol
- Feldspar
- Ferrpel
- Ferr
- Gyp
- Hvymin
- Kaol
- Marl
- Minxl
- Nodule
- Phos
- Salt
- Sil
- Sulphur
- Tuff
- Sideritic concretions

-
-

- Cht pbl
- Sideritic

FOSSIL

-
-
-
-
-
-
-
-
-
-
-
-
-

- Algae
- Amph
- Belm
- Bioclst
- Brach
- Bryozoa
- Cephal
- Coral
- Crin
- Echin
- Fish
- Foram
- Fossil

-
-
-
-
-
-
-
-

- Gastro
- Oolite
- Ostra
- Pelec
- Pellet
- Pisolite
- Plant
- Strom

STRINGER

-
-
-
-
-
-
-

- Anhy
- Arg
- Bent
- Coal
- Dol
- Gyp
- Ls

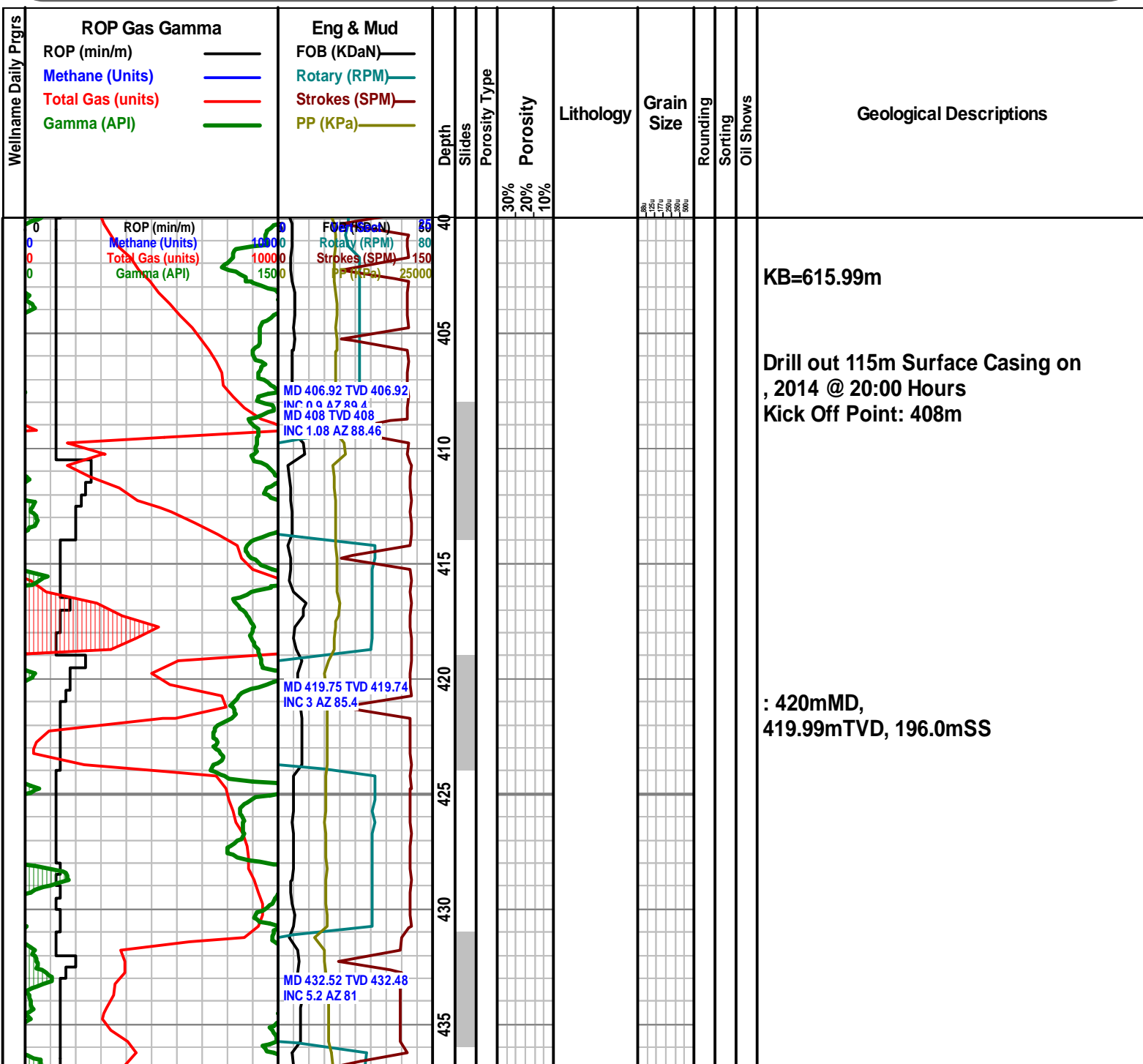
-
-
-

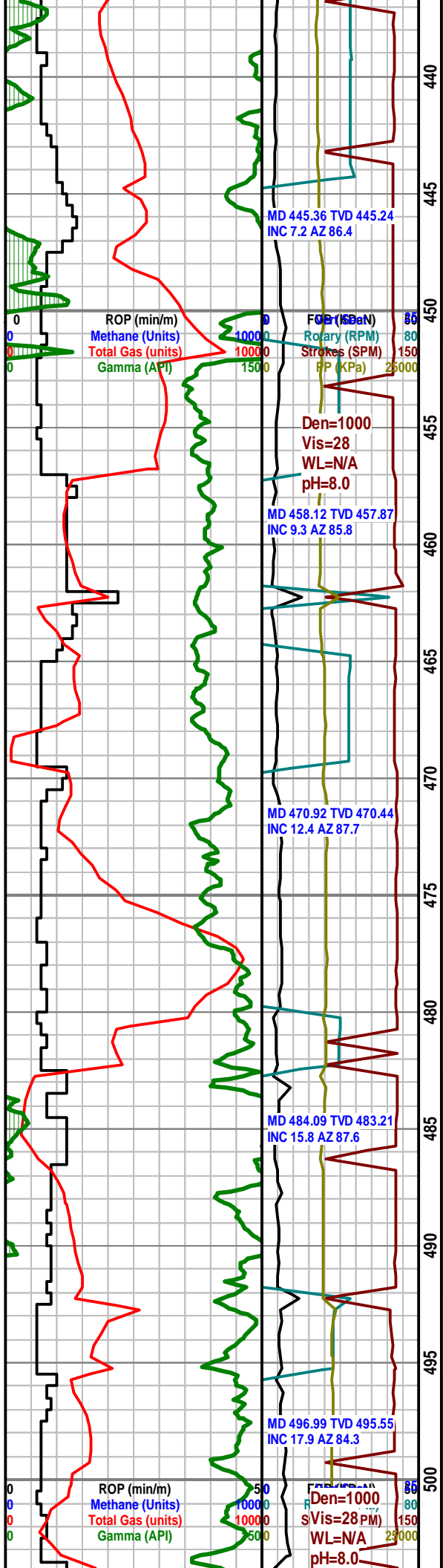
- Mrst
- Sltstrg
- Ssstrg

TEXTURE

-
-
-
-
-
-
-
-
-
-
-

- Boundst
- Chalky
- Cryxln
- Earthy
- Finexln
- Grainst
- Lithogr
- Microxln
- Mudst
- Packst
- Wackest

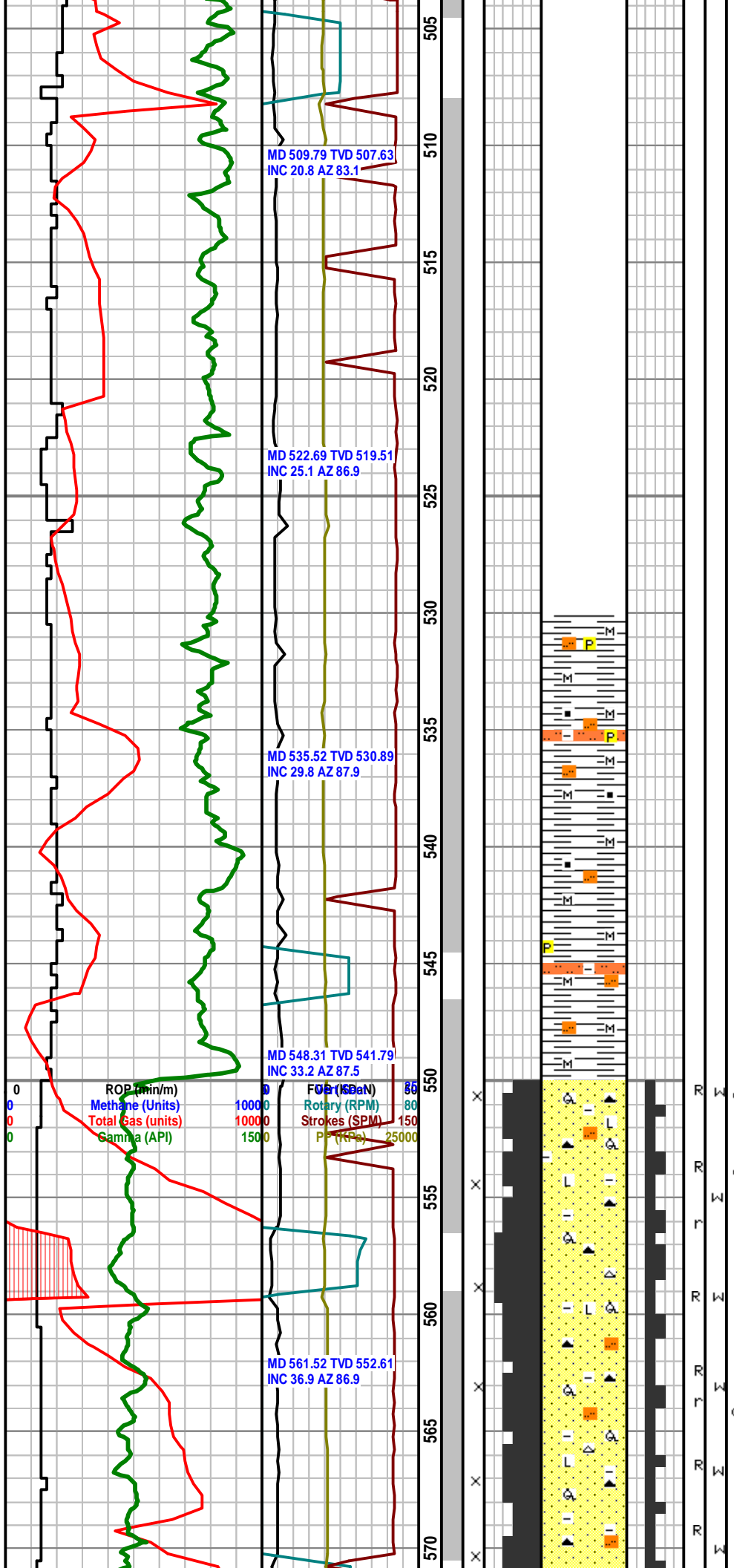




: 452.4mMD,
 452.22mTVD, 163.77mSS

: 493mMD, 491.75mTVD,
 124.24mSS

: 503.5mMD, 501.72mTVD,
114.27mSS



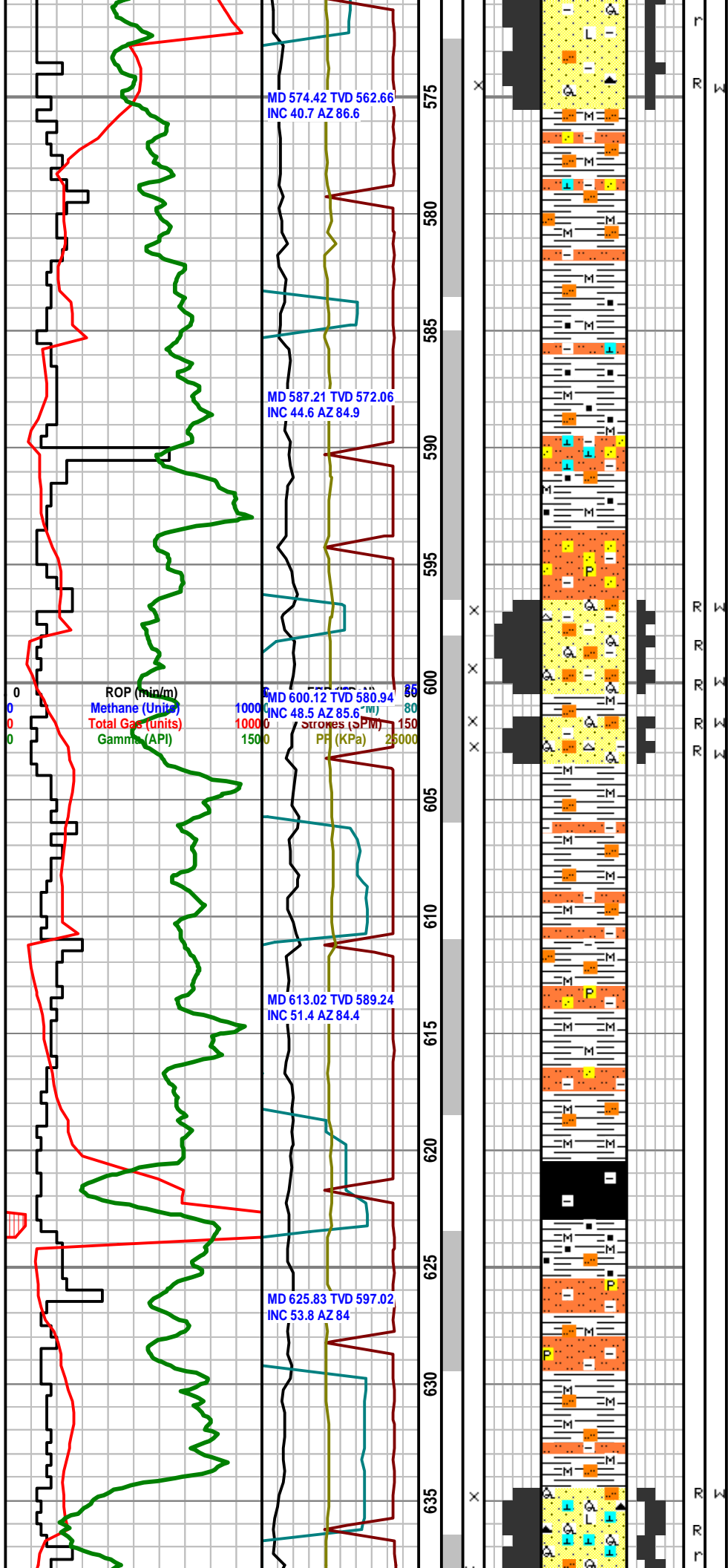
Sh / Siltst Lamn
Sh: dk gy, occ gy, sbplty, sbfis, micmica, slty ip, carb ip, tr pyr.
Siltst: lt gy, sils, arg ip, tr pyr, tt, no show.

: 550mMD, 543.20mTVD,
72.79mSS

Shaly Sandstone: off wh - lt gy, occ lt brwn, mainly fl(125-177u) grd, occ fu(177-250u) grd, qtz, occ lthc & cht, slty ip, arg ip, mainly rdd, occ sbrdd, well srt, g-vg intgran por 15-25%, dk brn oil was over shaker and in samples.

*550-575m Sand is shaly(Gamma 60-80) with dark brown oil and strong petroleum odor.





Sh / Siltst Lamn
 Sh: gy, occ lt gy, occ dk gy, sbply, fis-sbfis, micmica, slty ip, carb ip
 Sltst: lt gy, occ wh, sils, arg ip, sdy ip, calc cmt ip, tt, no show..

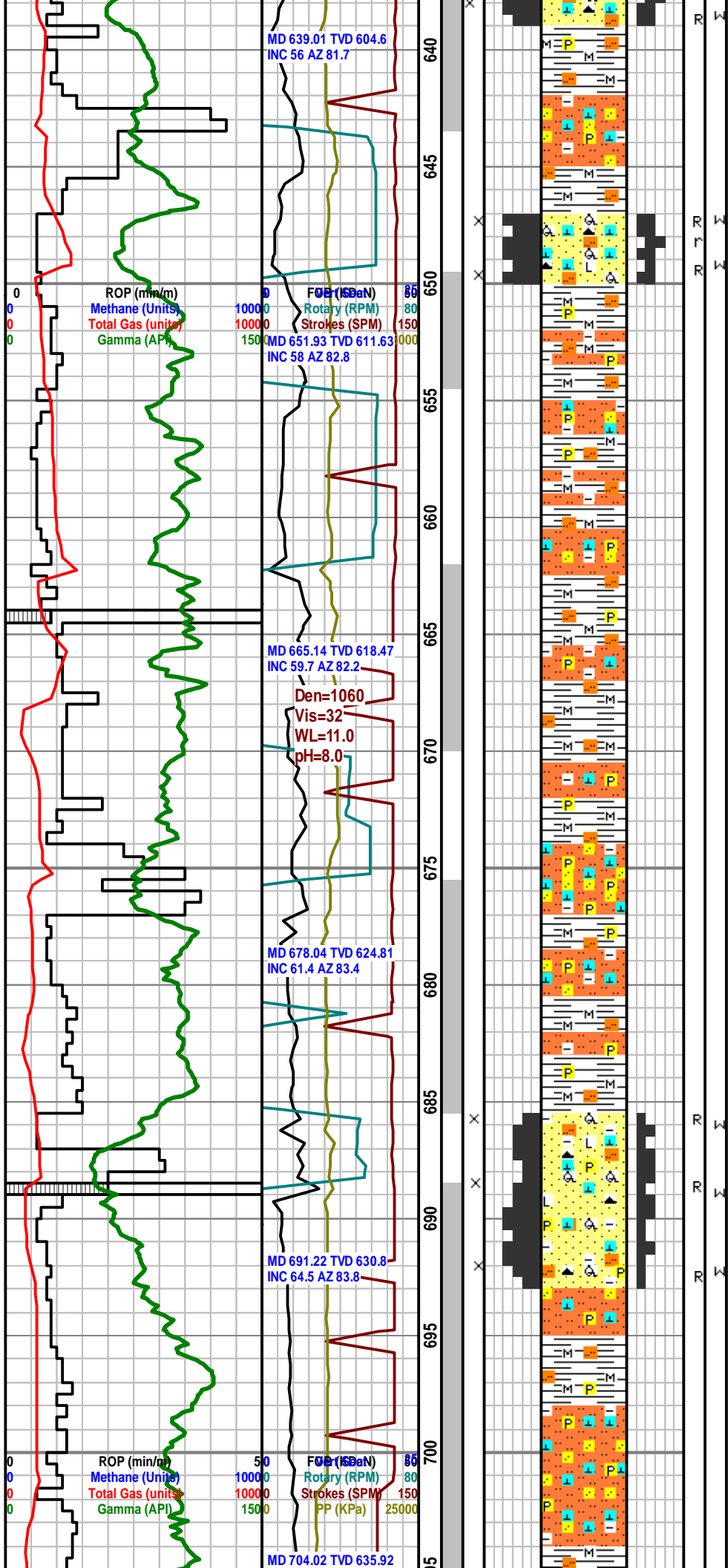
: 593.3mMD, 576.33mTVD,
 39.66mSS

Ss / Sh & Sltst intbd
 Ss: off wh - lt gy, mainly vfU(88-125u) grnd, occ fl(125-177u) grnd, qtz, tr cht, slty ip, arg ip, mainly rdd, well srt, g-vg intgran por 15-25%.
 Sltst: lt gy, sils, sdy ip, arg ip, tr pyr, no show.
 Sh: gy - dk gy, ply-sbply, sbfis, micmica, slty ip.

Coal: blk, occ dk brn, rthy, vit ip.
 : 623mMD, 595.34mTVD,
 20.65mSS

Sh / Sltst intbd
 Sh: gy, occ lt gy, occ dk gy, sbply, fis-sbfis, micmica, slty ip, carb ip
 Sltst: lt gy, occ wh, sils, arg ip, tr pyr, tt, no show..

: 634.5mMD, 602.05mTVD,
 13.94mSS



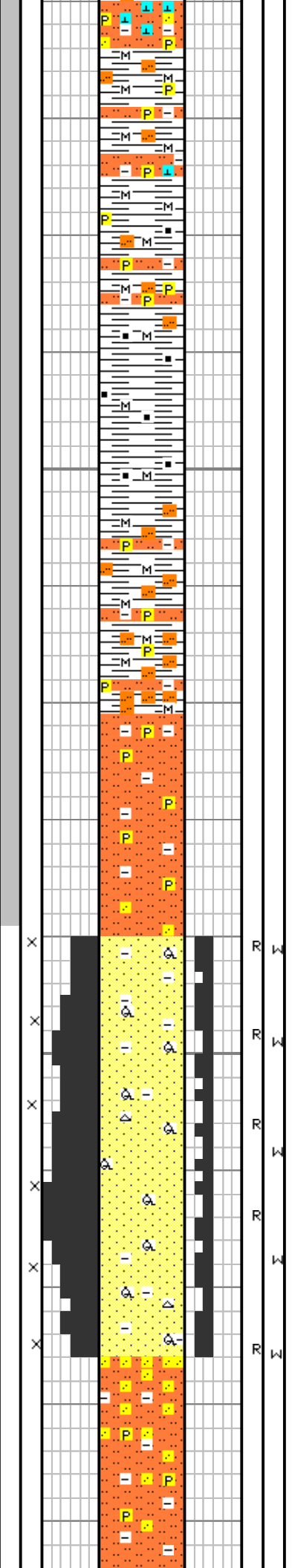
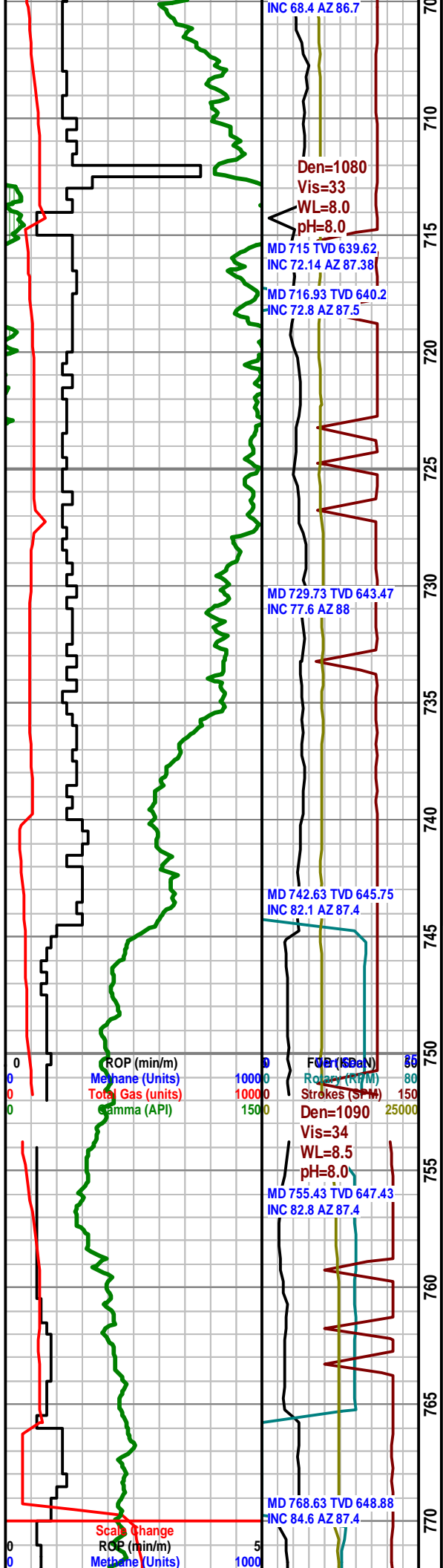
Ss/Sltst/Sh intbd
 Ss: off wh - lt gy, mainly fL(125-177u) grnd, occ vfU(88-125u) grnd, occ fU(177-250u) grnd, mainly qtz, occ lthc & cht, slty ip, common calc cmt, mainly rdd, occ sbrdd, w srt, g intgran por 15- 20%.
 Sltst: lt gy, occ wh, sils, sdy ip, arg ip, calc cmt ip, tr pyr, tt, no show.
 Sh: gy, occ dk gy, sbply, fis-sbfis, micmica, slty ip, tr pyr.

: 655mMD, 613.25mTVD, 2.74mSS

Sltst & Sh intbd
 Sltst: lt gy, occ wh, calc cmt ip, sdy ip, arg ip, pyr ip, sils, tt, no show.
 Sh: gy - dk gy, sbply, fis-sbfis, micmica, slty ip, tr pyr.

: 685.5mMD, 628.28mTVD, -12.29mSS

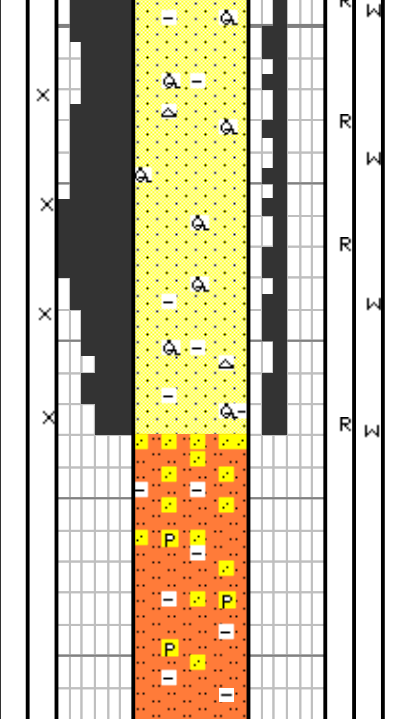
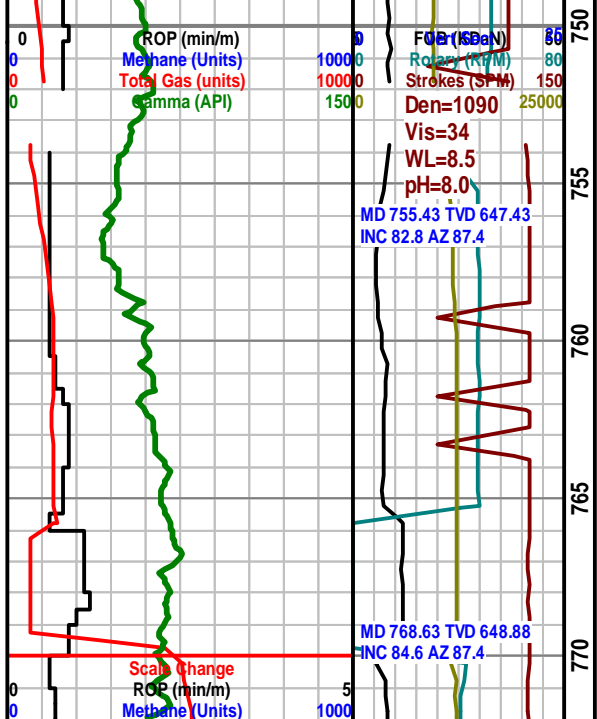
Ss / Sltst & Sh Lamn
 Ss: off wh - lt gy, mainly vfU(88-125u) grnd, occ fL(125-177u) grnd, mainly qtz, occ lthc & cht, pyr ip, slty ip, arg ip, calc cmt ip, mainly rdd, w srt, intgran por 10 - 20%.
 Sltst: lt gy, occ wh, calc cmt ip, sdy ip, arg ip, pyr ip, sils, tt, no show.
 Sh: gy, plty - sbply, fis-sbfis, micmica, slty ip, tr pyr.

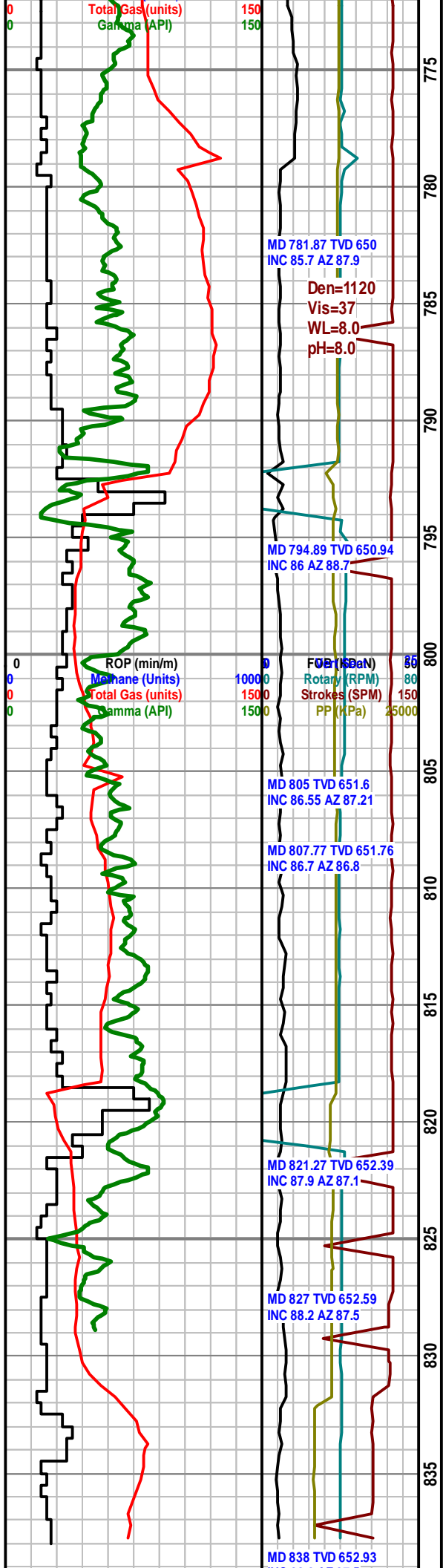


Sh / Slst Lamn
 Sh: gy, occ dk gy, sbplty, fis, micmica, carb ip, slty ip, tr pyr.
 Slst: lt gy, arg ip, pyr ip, sils, tt, no show.

: 735.5mMD, 644.61mTVD,
 -28.62mSS

Ss / Slst intbd
 Ss: off wh - lt gy, mainly fl(125-177u) grnd, occ vfU(88-125u) grnd, mainly qtz, arg ip, tr cht, mainly rdd, w srt, intgran por 15 - 30%. minor oil was over shaker and in samples.
 Slst: lt gy - gy, sils, sdy ip, arg ip, pyr ip, tt, no show.





: 775mMD,
649.45mTVD, -33.46mSS



Coal: blk, rthy ip, vit ip, strong H2S od

Shale: gy - dk gy, sbplty, fis, micmica, carb ip, slty ip, sdy ip, tr pyr.

Entered shaly sand(Gamma 50ish)
822.5mMD, 652.44mTVD, -36.45mSS

Shaly Ss: off wh, occ lt brn, mainly fL(125-177u) grnd, occ vfU(88-125u) grnd, predly qtz, tr cht, arg ip, mainly rdd, w srt, uncons, excl intgran por 20 - 30%, even med brn os, strong petr od. dk brn oil was over shaker. dull yel flor, inst stmg mky cut.

Entered Clean sand 831mMD,
652.71mTVD, -36.72mSS

Ss: off wh, occ lt brn, mainly fL(125-177u) grnd, occ vfU(88-125u) grnd, predly qtz, tr cht, mainly rdd, w srt, uncons, excl intgran por 25 - 30%, even med brn os, strong petr od. dk brn oil was over shaker. dull yel flor, inst stmg mky cut.

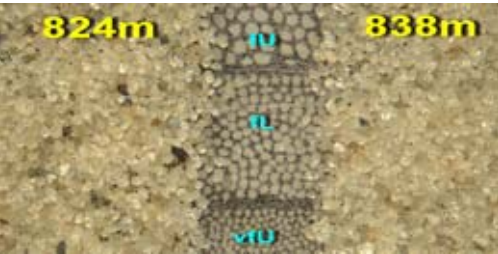
INC 88.2 AZ 87.5

Bit #1B 270m, Ulterra UD513
in@115m, out@838m
Drilled in 12.0 hrs, 60.25m/hr

Den=1120
Vis=45
WL=6.5
pH=8.0

840
45

759m 776m 791m 803m 824m 838m



865
0